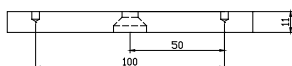
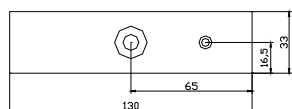
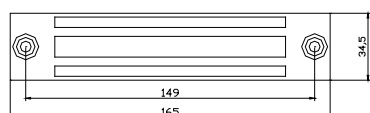




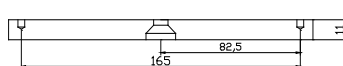
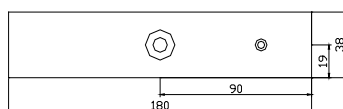
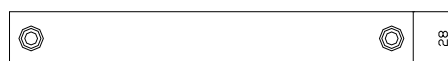
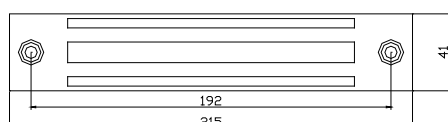
➤ EMSS300

Acier
inox



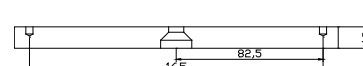
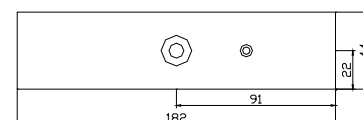
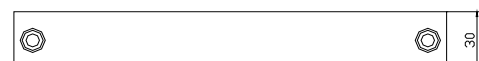
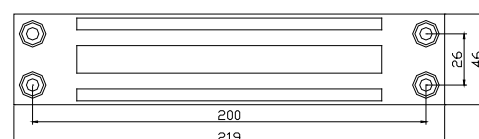
➤ EMSS600

Acier
inox



➤ EMSS800

Acier
inox



➤ Multi-tensions 12/24 V DC

➤ Étanche IP 67

➤ Boîtier en acier inoxydable

➤ Montage frontal ou latéral

izyx

	EMSS300	EMSS600	EMSS800
Montage	Applique		
Résistance à l'effraction	300 lbs*	600 lbs*	800 lbs*
Mode de fonctionnement	À rupture de courant (verrouillée sous tension)		
Tension d'alimentation	12/24 V DC		
Consommation	300/150 mA	400/200 mA	460/230 mA
Contact reed	Contact inverseur - Max. 24 V DC / 1A		
Indice de protection IP	IP 67		
Température de fonctionnement	-25 à + 65° C		
Dimensions ventouse (L x h x p)	165 x 34,5 x 27 mm	215 x 41 x 28 mm	219 x 46 x 30 mm
Dimensions contreplaque (L x h x p)	130 x 33 x 11 mm	180 x 38 x 11 mm	182 x 44 x 12 mm
Poids brut	1,5 Kg	2,3 Kg	2,8 Kg

* Résistance théorique maximale, donnée à titre indicatif (1 lbs = 0,4535 Kg = 0,4482 Newton)